



2007
BMW Catalog

WINGS

E-36 Lightweight Wing

4 piece non-adjustable rear wing. Direct bolt on.

\$650.00

\$850.00



E-36 Lightweight Wing

2 piece non-adjustable rear wing. Direct bolt on.

\$550.00

\$700.00



E-36 EVO PTG Wing

4 piece adjustable rear wing. Direct bolt on. T-36 hardened aluminum pitch hardware.

\$950.00

\$1,150.00



E-30 EVO Wing

2 piece adjustable rear wing. Direct bolt on. Carbon fiber wing blade.

\$550.00

\$650.00



M3 (E-30) Hood



Compression bonded edges with a special urethane core construction for light rigid parts. Factory style liners, with hardened steel threaded inserts for attaching hinges and latches.

\$800.00

\$950.00

Approx. 12 lbs.

M3 (E-36) Hood



Compression bonded edges with a special urethane core construction for light rigid parts. Factory style liners, with hardened steel threaded inserts for attaching hinges and latches.

\$800.00

\$950.00

Approx. 15 lbs.

M3 (E-36) GTR Hood



The GTR option has moulded in louvers. Includes aluminum grill screens. Compression bonded edges with a special urethane core construction for light rigid parts. Factory style liners, with hardened steel threaded inserts for attaching hinges and latches.

\$999.00

\$1,199.00

Approx. 15 lbs.

M3 (E-46) Hood



Compression bonded edges with a special urethane core construction for light rigid parts. Factory style liners, with hardened steel threaded inserts for attaching hinges and latches.

\$800.00

\$950.00

Approx. 15 lbs.

M3 (E-46) GTR Hood



The GTR option has moulded in louvers. Includes aluminum grill screens. Compression bonded edges with a special urethane core construction for light rigid parts. Factory style liners, with hardened steel threaded inserts for attaching hinges and latches.

\$999.00

\$1,199.00

Approx. 15 lbs.

M5 (E-39) Hood

Compression bonded edges with a special urethane core construction for light rigid parts. Factory style liners, with hardened steel threaded inserts for attaching hinges and latches.

\$800.00**\$950.00**

Approx. 17 lbs.

M5 (E-39) GTR Hood

The GTR option is a large scale venting cut out. Includes aluminum grill screens. Compression bonded edges with a special urethane core construction for light rigid parts. Factory style liners, with hardened steel threaded inserts for attaching hinges and latches.

\$999.00**\$1,199.00**

Approx. 17 lbs.



BMW BODYWORK

FRP

C/F

E-36 2003' M3 Bumper

2003' M3 E-46 style front bumper for your 1992 thru 2001 E-36. Includes 55 watt foglights and grill screens. Factory mounting brackets included for a quick and easy installation.

\$650.00

\$850.00



E-36 2003' M3 Splitter

Optional splitter for above bumper.

\$250.00

\$350.00



BMW BODYWORK**FRP****C/F****E-36 M3 Splitter**

Fits stock M3 front bumper.

N/A

\$500.00**E-36 M3 Folded Splitter**

2 Part extended length splitter with integrated vertical stabilizers.

\$750.00**\$950.00****E-36 M3 Race Splitter**

Fits M3 race bumper. Adjustable length.

\$275.00**\$375.00****E-46 M3 Folded Splitter**

Fits M3 bumper. Integrated vertical stabilizers. Direct bolt on.

N/A

\$550.00**E-46 M3 Folded Splitters**

2 piece folded splitters for M3 bumper. Direct bolt on.

\$350.00**\$450.00****E-46 M3 Adjustable Splitter**

ACS style 3 piece adjustable splitter for M3 bumper. All Carbon Fiber construction. Direct bolt on. Hardware included.

N/A

\$850.00

BMW BODYWORK

FRP

C/F

E-46 Decklid

Fit stock M3. High quality foam core construction. Factory style sealed liner. Direct bolt on.

\$625.00

\$800.00



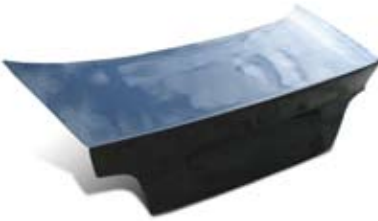
Approx. 10 lbs.

E-36 Decklid

Fits 2 door. High quality foam core construction. Factory style sealed liner. Direct bolt on.

\$625.00

\$800.00



Approx. 10 lbs.

E-36 Doors

Fits 2 door. High quality foam core construction. Factory style sealed liner with inner hinges. Complete door NOT a shell. Direct bolt on.

\$950.00

\$1,200.00



Approx. 10 lbs.

**FOR OFF ROAD USE ONLY IN VEHICLES
EQUIPPED WITH PROPER ROLLCAGES
FOR DRIVER AND PASSENGER
PROTECTION.**



PTG BODY PANELS

Front Fenders
Quarter Panels
Side Skirts
Rear Bumper
Front Bumper
Bumper Adapters



\$2800.00



BMW E-36 WIDEBODY

PTG Race Bumper

race Bumper for PTG Kit on page 8.

